



STELMINE | CANADIAN MINERAL
EXPLORATION
COURCY PROJECT

79
Audacious Projects



FORWARD-LOOKING STATEMENTS

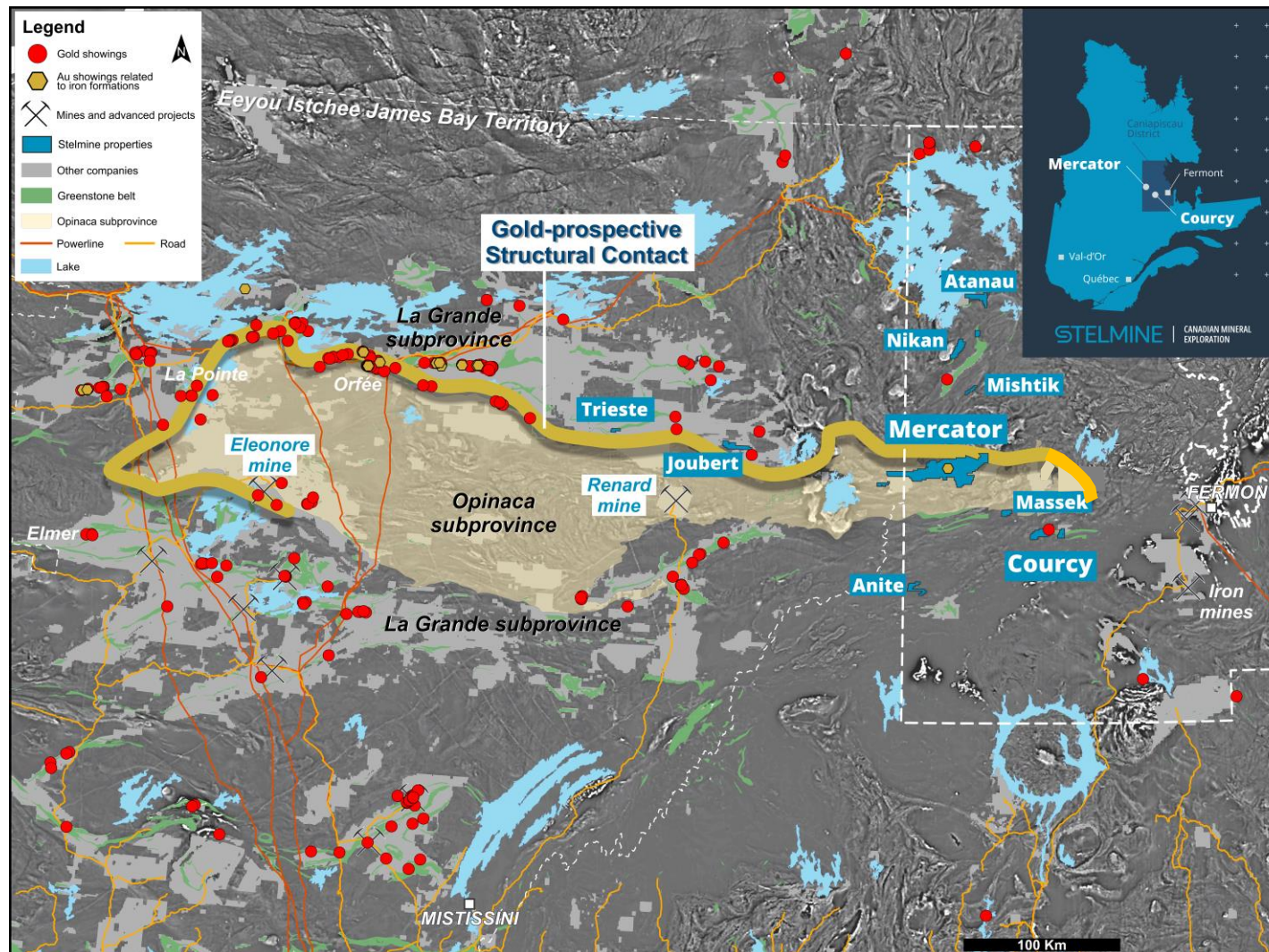
Cautionary note regarding forward-looking statements: This press release contains forward-looking statements, which reflect the Company's current expectations regarding future earnings-related events. To the extent that any statements in this document contain information that is not historical, then such statements are essentially forward-looking and can often be identified by the use of words such as "considers", "anticipates", "expects", "believes", "projects", "plans", "potential", "suggests" and "believes". Forward-looking statements involve risks, uncertainties, and other factors that could cause actual results to differ materially from those expressed or implied by such forward-looking statements. These risks and uncertainties are described in the quarterly and annual reports and in the documents submitted to the securities administration available on the Sedar+ site. Although the Company believes that the assumptions underlying the forward-looking statements are reasonable, undue reliance should not be placed on such statements, which speak only as of the date of this document. The Company disclaims any intention or obligation to update or revise these forward-looking statements, whether as a result of new information, future events, or otherwise, except as required by applicable securities laws.

Qualified Person

The technical information in this news release has been reviewed and approved by Michel Boily, P.Geo., Ph.D. Mr. Boily is the qualified person responsible for the scientific and technical information contained herein under National Instrument 43-101 standards.



OUR PROPERTIES



Stelmine holds a total of 1,815 claims (100% STH) covering an area of 933 km², including the **Mercator** and **Courcy** flagship properties, both under active exploration.

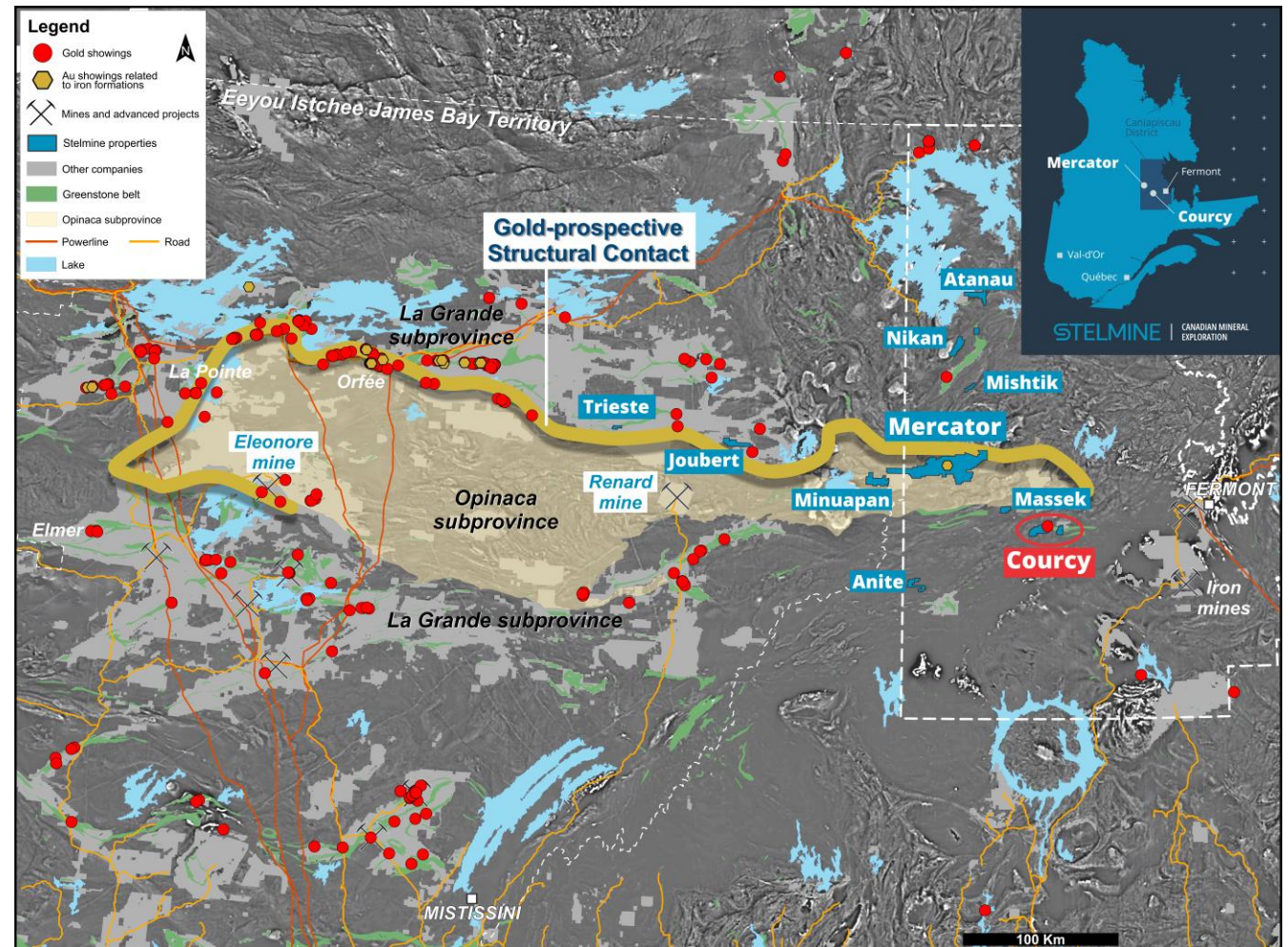
All claims are located within the underexplored eastern half of the Opinaca metasedimentary basin and the Ashuanipi Complex.

- 100 to 200 km west of Fermont, Quebec
- 60 km from the nearest infrastructure
- Exceptional mining and exploration jurisdictions of Quebec
- Accessible by floatplane and helicopter.



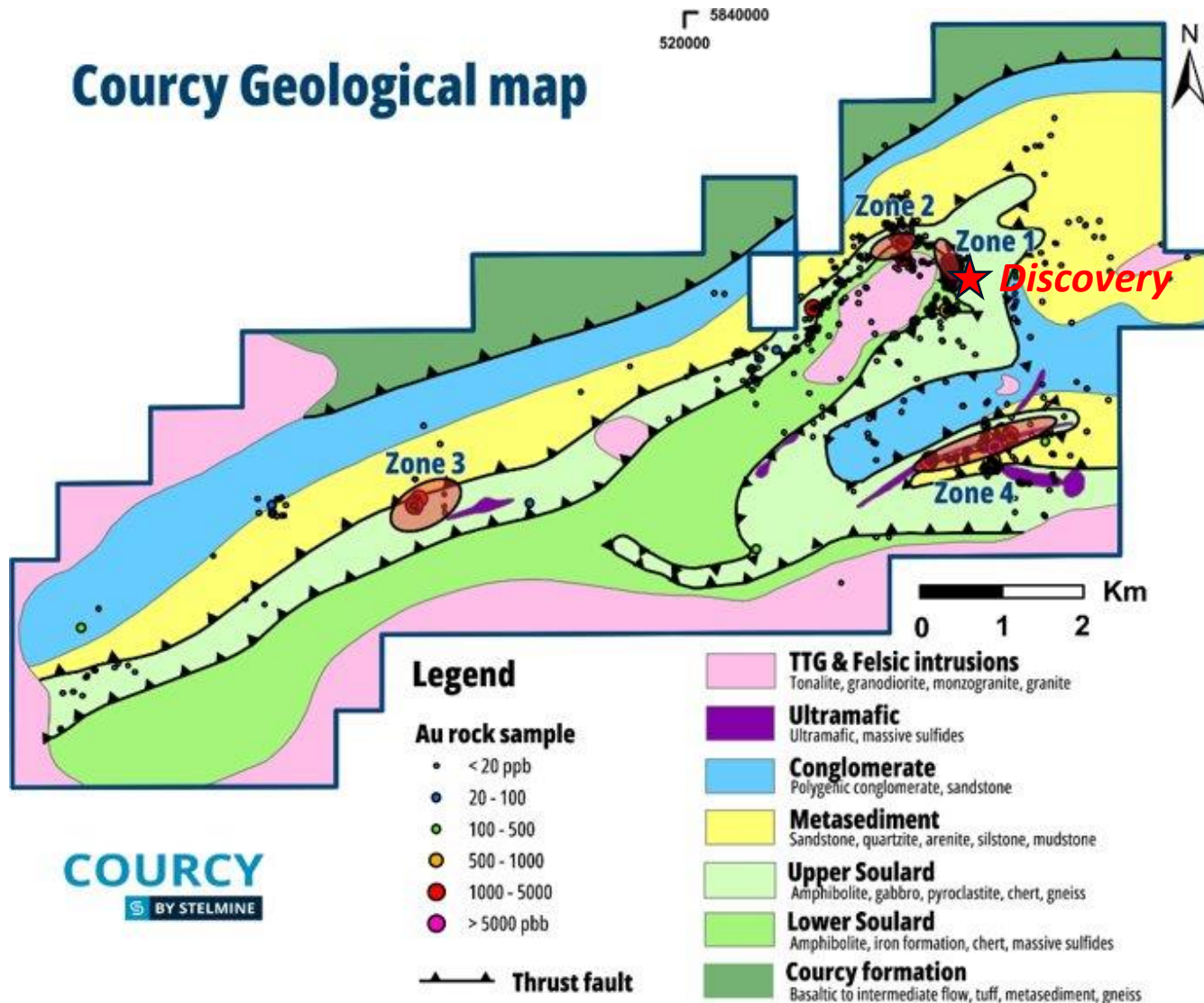
Faits Saillants

- Couvre 86 km² (165 claims) – 100 % STH
- On note des similitudes géologiques avec le gisement **Musselwhite** en Ontario, formé dans des formations de fer polydéformées et métamorphisées, où la production passée plus les ressources actuelles totalise environ 6 Moz Au.





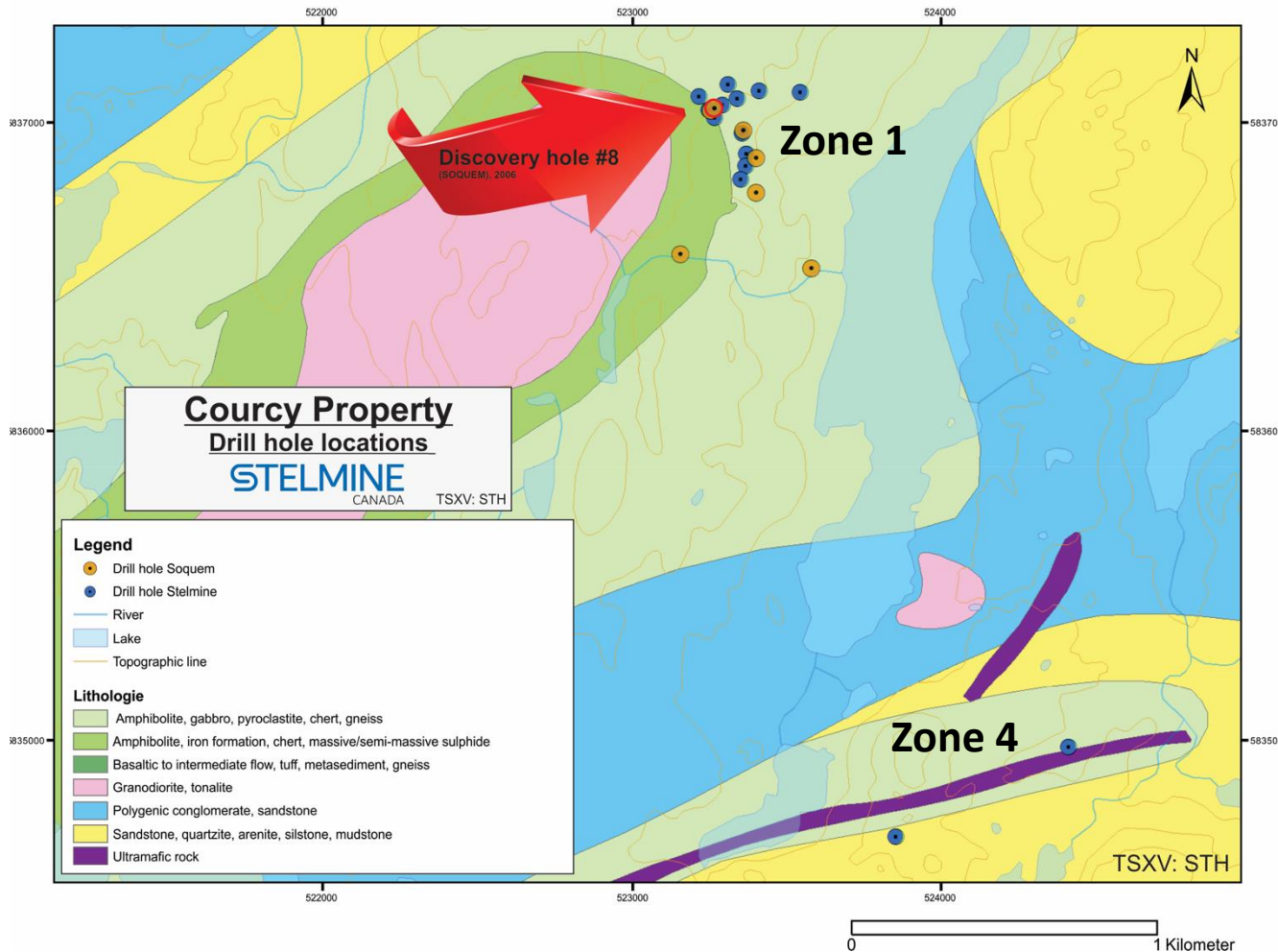
COURCY DISCOVERY



- Best drill results include 2.9 g/t Au over 10 m from 24.4 m downhole, including 5.3 g/t Au over 4.4 m (Zone 1)
- Drilling has targeted gold mineralization now interpreted to be associated with the Couteau and Brulis thrust faults, which extend for more than 20 km. The 2006 discovery hole drilled by SOQUEM was the last of only 8 shallow boreholes ever completed at this under-explored project.



COURCY DRILLING CAMPAIGN HIGHLIGHTS



- A maiden drill program of 14 boreholes comprising 2,237 meters of core was completed by Stelmine during the 2021-2022 winter season
- 12 of the 14 holes tested Zone 1, in proximity to SOQUEM's discovery hole #8. Two other holes tested geochemical anomalies associated with a regional fault in Zone 4
- Stelmine has extended the prospective gold system in Zone 1 to at least 300 meters along the Couteau Fault.



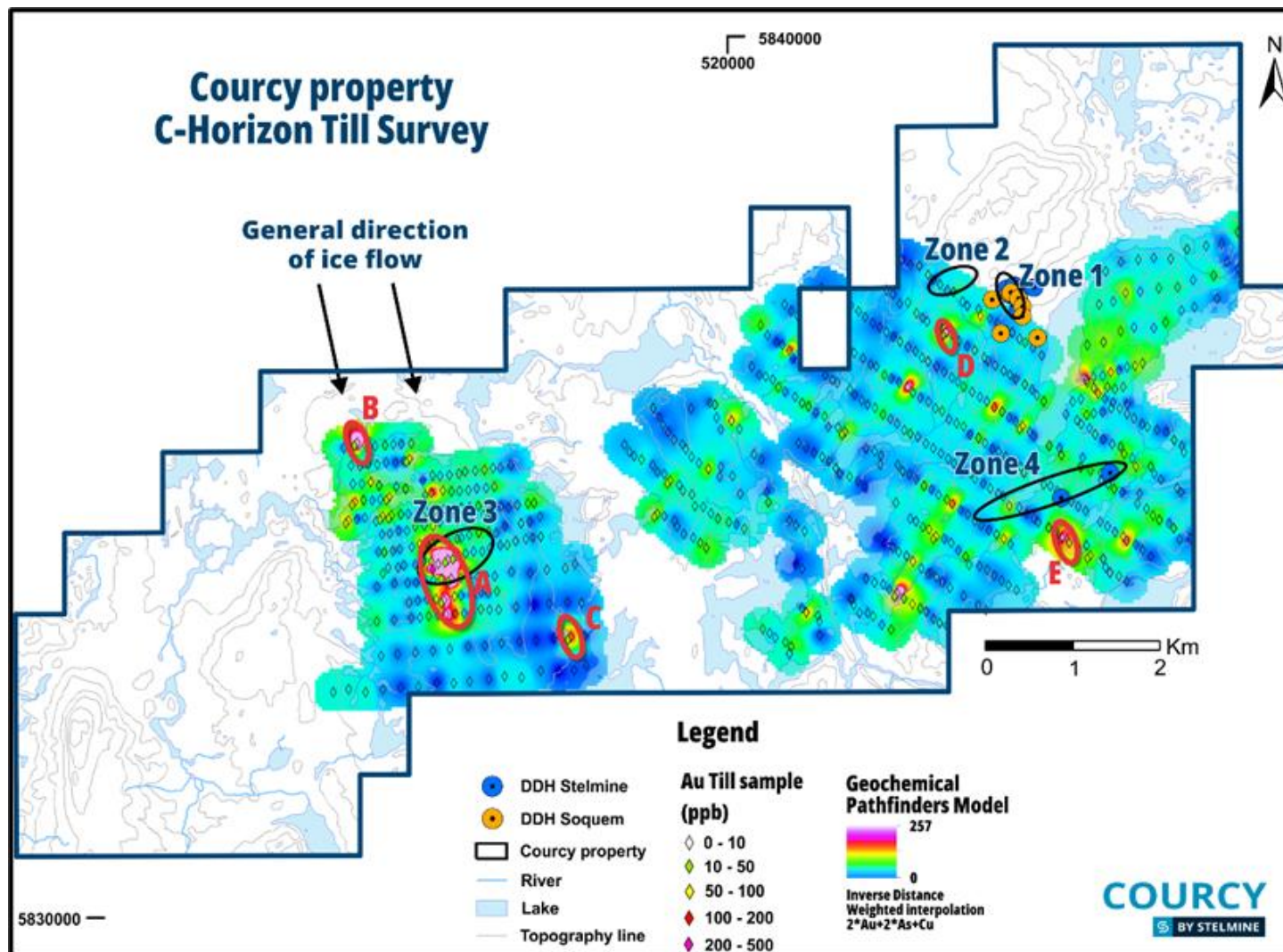
COURCY DRILLING CAMPAIGN RESULTS

DDH_No,	Au (g/t)	De (m)	À (m)	Épaisseur (m)*	MF (g/t*m)
ZONE 1					
STH21-COU001	2,9	24,4	34,4	10,0	28,6
<i>Incl.</i>	5,3	26,8	31,2	4,4	23,2
STH21-COU002	2,8	21,0	25,5	4,5	12,6
<i>Incl.</i>	12,3	21,0	22,0	1,0	12,3
	1,53	40,5	44,5	4,0	6,1
	0,55	52,5	61,0	8,5	4,7
STH21-COU003	2,28	22,4	24,5	2,2	5,0
	1,06	71,3	71,8	0,5	0,5
	0,33	85,5	87,0	9,9	3,3
<i>Incl.</i>	1,12	94,4	95,4	1,0	
STH21-COU004	1,64	33,5	35,2	1,7	2,8
STH22-COU006	0,30	14,0	18,5	4,6	1,4
	0,80	27,5	29,5	2,0	1,6

*Épaisseur apparente, Épaisseur réelle non déterminée

DDH_No,	Au (g/t)	De (m)	À (m)	Épaisseur (m)*	MF (g/t*m)
STH22-COU007	0,79	4,0	11,5	7,5	5,9
<i>Incl.</i>	1,25	6,0	8,5	2,5	3,1
	1,27	13,5	15,5	2,0	2,5
	1,23	24,5	25,5	1,0	1,2
	2,30	43,5	43,9	0,4	0,9
STH22-COU010	2,11	47,1	49,1	2,0	4,2
	2,06	74,0	75,5	1,5	3,1
	2,20	113,2	114,4	1,2	2,6
STH22-COU011	1,58	26,0	29,0	3,0	4,7
STH22-COU012	35,7	139,8	140,2	0,4	14,3
	1,02	162,5	164,0	1,5	1,5
	0,40	104,0	107,7	3,7	1,5
ZONE 4					
STH22-COU014	0,78	52,5	54,0	2,0	1,6

- Assay results from Zone 1 show the presence of visible gold (VG) in three holes
- The maiden drilling program only investigated a small, <1 km² area of a total of 85 km² for the entire property.



- Results show that the most significant till anomaly, overlapping Zone 3, is found about 7.5 km to the SW of the discovery area drilled by SOQUEM in 2006 and by Stelmine in 2021-2022
- A second anomaly is found less than 1 km to the south of Zone 4 drilled by Stelmine in 2021-2022
- Three additional anomalies are found 1.7 km upstream (glacial transport direction), 1.6 km southeast of the main anomaly, and also 0.8 km to the west of the discovery
- Till geochemistry values of up to 272 ppb Au were obtained.



GUIDED BY OUR VALUES



RESPECT

At the core of healthy relationships are mutual respect and effective communication, and that's the approach we take with our partners, suppliers, and employees.



TRANSPARENCY

Transparency is the foundation of shared success. Our commitment to this value is a core principle of our leadership.



COMMUNITY OUTREACH

Active participation in the communities within which we operate leads to shared understanding— our vision of community collaboration and outreach.



ENVIRONMENT

A trademark of our diligence and expertise, is that everything we do includes constant efforts in favor of sustainability and impact minimization.



TSXV: [STH](#) | OTCQB: [STHFF](#)

Christian de Saint-Rome

Interim President and CEO

info@stelmine.com

418.626.6333

stelmine.com

